

DNA Tests Refute Evolution Theory Human and Ape DNA are Very Different

[Editors' Note: This article is based solely on science and not religion. Our writings are completely backed up by the latest scientific research papers published in the most respected peer-reviewed scientific journals. Anyone may contact us by sending an email to: WisdomKnight411@Yahoo.com]

June 14, 2020

This is the Age of DNA Testing – so how come you never heard about DNA test results that compared ape and human DNA?

Many DNA researchers have compared ape and human DNA and they have all actually found that the DNA of apes and humans are so different that the differences contradict evolution theory.

But you have not read or heard about any of these new discoveries because there is a worldwide Darwin Conspiracy run by very powerful atheists who have been able to suppress the truth about evolution theory and have instead fed us lie after lie for well over 100 years.

This Darwin Conspiracy has become so powerful in academia that it is no longer permissible to question evolution theory. Universities all over the US and Europe routinely push out any faculty member that “dares to criticize evolution theory.”

But we are not part of academia so we can bring you the truth about the latest scientific discoveries that prove Darwinians are liars and evolution theory is a con job perpetrated by atheists.

For Fifty Years Darwinians Have Lied About Ape and Human DNA Being Identical

Beginning about 1970, Darwinians began to claim that ape and human DNA are 99% identical.

Back in the 1970's, we could not test or compare DNA, so there was no way for us to actually know if ape and human DNA were nearly identical.

But we have now perfected DNA testing techniques and we found that the Darwinians

were very wrong.

Genetic researchers all over the world have found that the DNA of humans and apes are “remarkably” and inexplicably different.

In fact the DNA of apes and humans are so different that the lack of similarity directly contradicts the very foundations of evolution theory.

According to Darwinians, Chimpanzees are the closest relative of humans. Darwinians claim that humans and Chimpanzee “evolved” from a common ancestor, and their “genetic matter” are nearly identical.

But four teams of genetic researchers working together have found that the **human Y chromosomes have twice as many genes as the Chimpanzee Y chromosomes.**

Just think about that for a moment – twice as many genes!

Even more shocking are their discoveries informing us that the structures of the Chimpanzee and human Y chromosomes are so dissimilar it is not possible for the evolution paradigm to explain the differences.

[These discoveries were detailed in a research paper published by *Nature* on January 13, 2010 and the paper is entitled “Chimpanzee and human Y chromosomes are remarkably divergent in structure and gene content.” Seventeen highly respected genetic researchers formed four teams to complete this amazing scientific research project.]

But you have not read or heard about any of these new discoveries. As we already explained, that is because there is a worldwide Darwin Conspiracy run by very powerful atheists who have been able to suppress the truth about evolution theory and have instead fed us lie after lie for well over 100 years.

In the rest of this article, we provide you with **visual proof** that ape and human DNA are inexplicably different. You can see the differences with your own eyes and we do believe that in this case, seeing is believing.

DARWINIANS HAVE KNOWN SINCE 1977 THAT THERE ARE VAST AND INEXPLICABLE DIFFERENCES BETWEEN APE AND HUMAN DNA

We have accused Darwinians of willfully lying when they told us over and over, day after day, “the genetic matter of apes and humans is 99% identical.”

The three sets of diagrams below provide evidence to back up our accusation – the

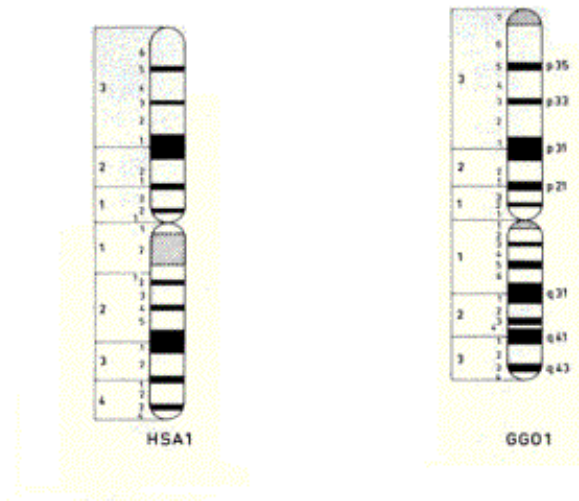
diagrams provide us with side by side comparisons of human and gorilla chromosomes that have been stained with chemicals so we can see “chromosome bands.”

When chromosomes are stained with certain chemicals, different types of DNA will stain in different colors and shades of colors. The result is that the chromosomes will show colored “bands” and that gave rise to the term “chromosome banding.”

Our point is that identical DNA will create identical chromosome banding patterns. So if two chromosomes do not have identical chromosome banding patterns, then the two chromosomes cannot contain identical DNA.

Apes have 24 pairs of chromosomes and humans have only 23 pairs. The first illustration below compares human chromosome 1 side by side with gorilla chromosome 1. You can easily see that the two chromosomes are obviously not 99% identical – maybe at best they are 75% similar.

HUGE DIFFERENCES BETWEEN HUMAN AND APE CHROMOSOME 1



Human Chromosome 1

**Gorilla Chromosome 1
(Gorillas are apes)**

The above diagrams show "chromosome bands" around the human and gorilla chromosome 1.

When chromosomes are stained with certain chemicals, different types of DNA will stain in different colors and shades of colors. The result is chromosomes will show "bands" and that gave rise to the term "chromosome banding." The colors and depth of colors of chromosome bands also vary depending on the chemical used for staining.

The diagrams above were published in a book written by atheists who contrived to show as much similarity as possible between human and gorilla chromosomes. The atheists chose chemicals and staining techniques that would show the greatest similarity. But as you can easily see, the "banding patterns" of the human chromosome are very different from that of the gorilla chromosome and this proves that the DNA of the two chromosomes is also very different.

Chromosome banding was widely used by scientists for nearly a hundred years but has recently been superceded by more advanced digital imaging techniques. However, chromosome banding is still a great way to easily VISUALLY compare the contents of two different chromosomes.

[Diagrams from "Molecular Structure of Human Chromosomes" by Jorge J. Yunis, M.D., published 1977 by Academic Press]

One major difference between the human and gorilla chromosome 1 is that the gorilla chromosome has a medium sized gray banded area at the top that is entirely missing from human chromosome 1.

Another example of major differences is that human chromosome 1 has a very wide gray band near the middle but the gorilla gray band in the middle is very narrow, not even one fifth the size.

Here is something else we need to understand about chromosome banding:

If chromosome bands are different then it is certain the DNA is different but the reverse is not true because different DNA can stain the same. An analogy is two parking lots both full of blocks of white vehicles, and blocks of black vehicles. The color is just one indicator of similarity – but there are white Fords and white BMWs, and some Fords are SUVs and others are sedans. Similarly, many different genes stain exactly the same color.

Our point is that just because a section of human chromosome is black it does not mean the DNA there is identical to the DNA found in a black section of the gorilla chromosome in the diagrams.

But if one chromosome band is white and the other band is black, then it is a certainty the DNA is very different.

Taking all this into consideration, there is no question that the DNA of human chromosome 1 is very different from that of gorilla chromosome 1.

Let's compare another pair of chromosomes.

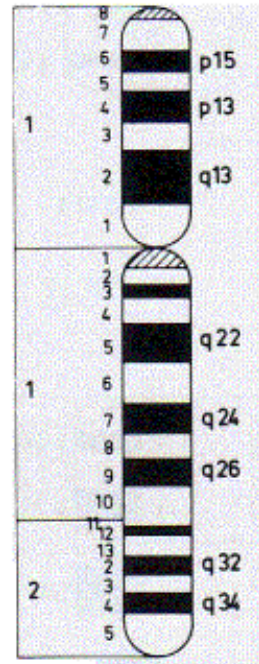
When Darwinians compare human and gorilla chromosomes, they like to use human chromosome 4 as an example, even though they never compare it to gorilla chromosome 4. Instead, Darwinians compare human chromosome 4 to gorilla chromosome 3. Darwinians have made the absurd claim the two chromosomes are a “nearly identical match.” This is because they think you do have the banding results contained in the diagram below to know any better.

HUMAN AND GORILLA DNA ARE VASTLY DIFFERENT



HSA 4

Human Chromosome 4



GGO 3

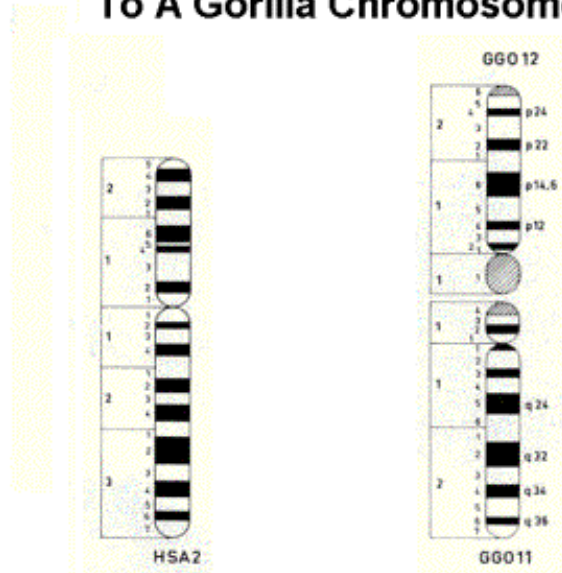
**Gorilla Chromosome 3
The Closest Match to
Human Chromosome 4**

[Diagrams from "Molecular Structure of Human Chromosomes" by Jorge J. Yunis, M.D., published 1977 by Academic Press]

From the above diagram you can easily see that the human and gorilla chromosomes are not anywhere close to being identical.

Let's analyze a third set of chromosome comparisons below. You are going to be especially shocked by this one because the two chromosomes do not even resemble each other.

You Cannot Even Match Human Chromosome 2 To A Gorilla Chromosome



Human Chromosome 2

**Gorilla Chromosomes 11 and 12
Lined up end to end in attempt
to match Human Chromosome 2**

The left diagram above is human chromosome 2. But there is no real match to it.

Humans have 23 pairs of chromosomes but gorillas have 24 pairs. This creates an insurmountable hurdle when Darwinians try to find similarities between gorilla and human chromosomes.

Believe it or not, the best the Darwinians can do to try to match gorilla chromosomes to human chromosome 2 is to use two gorilla chromosomes.

Darwinians have concocted the preposterous idea that gorilla chromosome 11 and 12 "fused" together to form human chromosome 2, but they have never even attempted to propose the DETAILS OF HOW two chromosomes could fuse and become one. (We presume they are not thinking that Crazy Glue did it.)

There is no example of "chromosome fusion." Darwinians often say that one out of every 1000 babies is born with a "fused chromosome" but that is a blatant LIE. They are really referring to Down syndrome babies, who have a chromosome TRANSLOCATION, not fusion. Down syndrome babies are born with the same 23 pairs of chromosomes that every other baby has.

Furthermore, even if you compare human chromosome 2 to gorilla chromosome 11 PLUS 12, there are huge differences that make it impossible for humans to have evolved from gorillas (or other apes).

[Diagrams from "Molecular Structure of Human Chromosomes, by Jorge J. Yunis, M.D., published 1977 by Academic Press.]

From 1940's to 1970's there were many studies of ape and human chromosome banding patterns. All the studies found vast differences between the banding patterns of ape versus human chromosomes.

Obviously, this means Darwinians have known for over 60 years that there are significant differences between ape and human DNA.

Nonetheless, Darwinians have lied to us millions of times by claiming the "genetic material of apes and humans are 99% identical."

But Darwinians are worse than just liars – Darwinians are con artists and they cause much harm to society because evolution theory is preventing real progress in real science.

Evolution theory is a con job but it has been adapted as the central theory around which all of biological sciences are based. You cannot make advances in a science that is based on a false theory at the center.

The fake evolution theory is preventing us from discovering cures for cancer, heart disease, diabetes, etc. Until scientists bury the evolution theory that is now at the heart of their biological sciences, they cannot make any major advances.

If you would like to contact us, please email us at:
WisdomKnight411@Yahoo.com